

Tribe



The background features a large, stylized globe in the center, composed of a circular arrangement of hands reaching outwards. The entire scene is set against a light yellow background with several five-pointed stars scattered around. The text is centered and uses a mix of bold, italicized, and plain sans-serif fonts.

OUR TRIBE ARE THOSE WHO

dream a collective dream with us.

WE ARE PART OF THE SAME STORY,
STRIVING FOR THE SAME ENDS,

weaving the same world.

WE EXTEND THROUGH TIME AND ARE IN MANY PLACES,
YET STILL ONE.

our tribe is where we belong.

IT IS WHERE WE ARE KNOWN, WHERE WE ARE SEEN
FOR WHO WE ARE AND WHAT WE ARE BECOMING.

HERE WE ARE BOTH

vulnerable and powerful.

HERE WE RECEIVE AND GIVE MOST INTIMATELY.

OUR TRIBE IS MORE THAN THE CIRCUMSTANCE OF OUR BIRTH.

it is the resonance of our life.

WE MAKE OUR TRIBE, CHOOSE OUR TRIBE, AND

discover our tribe.

AND ULTIMATELY MORE OF EVERYTHING BECOMES OUR TRIBE.

to tribe is to belong.



adventure —

Philanthropic tribes embark on adventures—entering the unknown, opening paths, confronting obstacles, and changing odds. They quest to see what's often unseen, to understand what is and what could just as well be. They're not simply funders but *story makers* who initiate new beginnings and change endings. They dream things into existence. The journeys we make with our philanthropic tribe can be the most meaningful of our lives. And the people with whom we adventure are those with whom we deeply bond. To tribe is to dare together.

QUESTIONS

WHAT MAKES A JOURNEY TRANSFORMATIVE?

HOW MIGHT WE INFUSE ELEMENTS OF ADVENTURE INTO THE PHILANTHROPIC EXPERIENCE?

WHAT DO GREAT MYTHS TELL US ABOUT WHAT WE SEEK AND HOW TO BECOME HEROES AND HEROINES?



depth —

When we share what matters most in our lives, we connect deeply. We tribe. Philanthropic tribes are more than organizations or groups. And they don't happen just because we do things together. Tribes are more intimate. They feel like our relations. Deep rapport arises when we share our core. It can emerge in a moment with someone we've just met. Depth doesn't require years of contact. But we must venture into the territory of soul and heart. Our own dimensionality determines the ease with which we do this.

QUESTIONS

HOW DO WE GROW OURSELVES SO WE CAN HAVE THE MOST MEANINGFUL INTERACTIONS?

HOW OFTEN DO WE HAVE CONVERSATIONS THAT IMPACT THE TRAJECTORY OF SOMEONE'S LIFE?

WHAT SPACES MAKE DEEP RAPPORT MORE OR LESS LIKELY?



resonance —

When we embody generosity, we radiate it. Exude it. It overflows from us and shapes every encounter. Anyone near us is likely to feel more grateful and abundant. They may describe it as feeling more alive, more connected to their own heart and passion, or more in love with life. Radiating the energy of generosity is one of the most essential things a philanthropic tribe does. Energy, more than structure, holds the tribe. Sometimes the tribe hangs together simply because it feels good just to be with others who live so magnificently and vibrantly.

QUESTIONS

DO WE RADIATE ABUNDANCE OR FEAR AND SCARCITY FROM THE PRESSURE TO SURVIVE AND ACHIEVE?

WHO AROUND US LIVES GENEROSITY MOST BRILLIANTLY, REGARDLESS OF WHAT THEY GIVE?

HOW MIGHT WE GROW THE ENERGY OF GRATITUDE, LOVE, AND ABUNDANCE IN OUR ENCOUNTERS?



potentiation —

We know only a tiny part of our giftedness. Most of our ability lies enfolded below the surface, like a tree waits in a seed. We have yet to discover and bring it forth. Insights, breakthroughs, and new parts of our being need invitation and space to bloom. Powerful philanthropic tribes create these. They equip givers to craft their life path. This makes the tribe immensely attractive. People seek it to expand and live more abundantly. Once our survival needs are met, to *have more* means less than to *be more*. Growth is the irresistible urge.

QUESTIONS

DO PEOPLE JOIN US TO LIVE WITH MORE ABUNDANCE AND TO BECOME WHAT THEY MIGHT NOT ANYWHERE ELSE?

WHAT IS TRYING TO HAPPEN IN THE LIVES OF OUR GIVERS—WHAT DO THEY NEED BUT RARELY FIND?

WHERE DO PEOPLE GO TO EXPERIENCE THEMSELVES AND THE WORLD MORE EXPANSIVELY?



belonging —

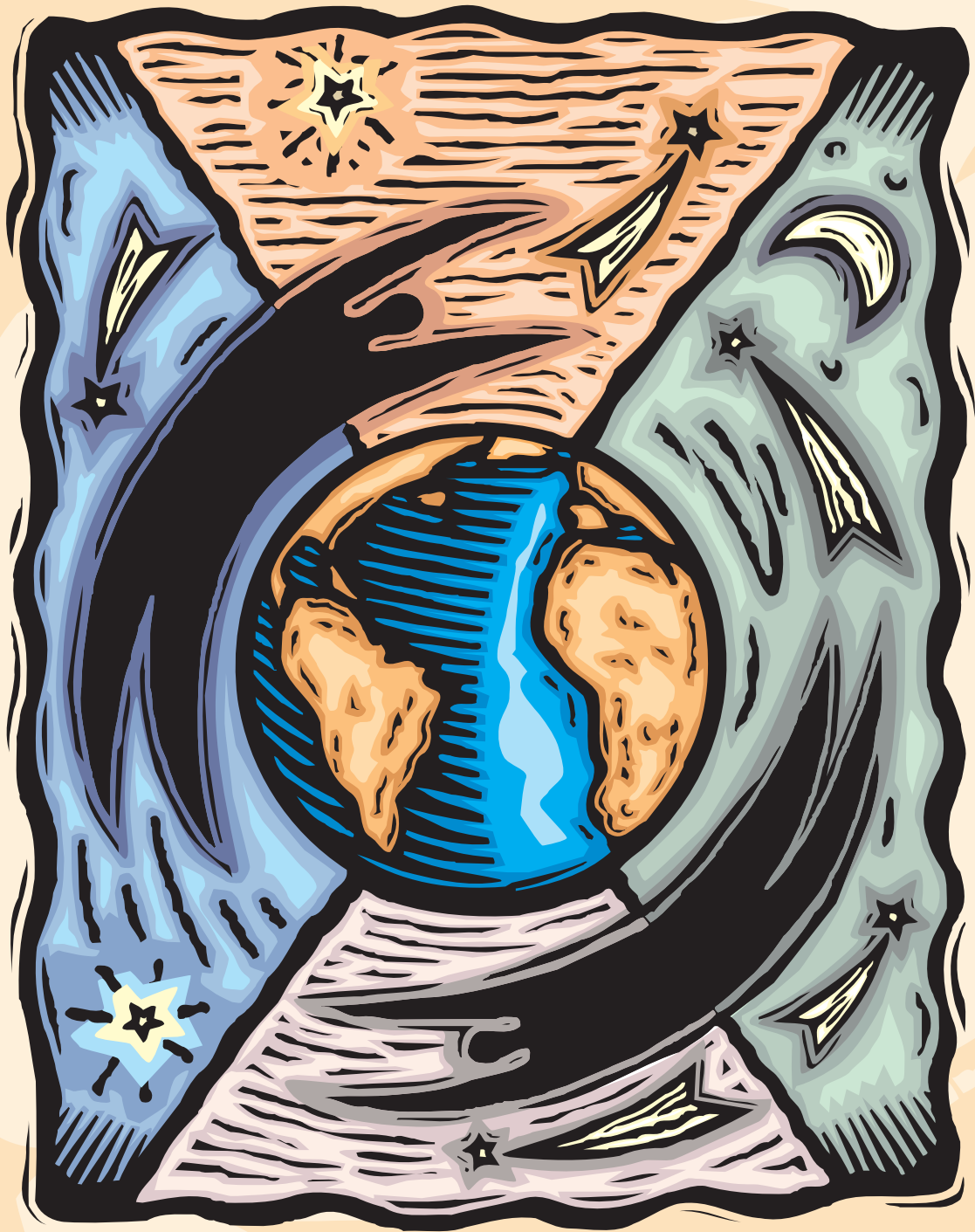
In tribe, you are part of me. Our identities and separations soften as we open and merge into something larger. This quenches a thirst at our core—to join and belong, to plunge into the relatedness at the heart of reality. We can tribe with any person, place, or part of life. To tribe is, most simply, the way we immerse and become *a part of* rather than *apart from*. Philanthropy, the love of humankind, is the essence of tribe. When we move beyond ourselves to serve life, we move into greater belonging, connection, and intimacy.

QUESTIONS

WHO IS OUR PHILANTHROPIC TRIBE AND WHERE IS OUR OUTER EDGE?

WHAT THINGS ARE WE DOING THAT WORK AGAINST THE EMERGENCE OF TRIBE?

HOW DOES WEALTH BOTH INCREASE AND DECREASE THE CAPACITY TO INTIMATELY TRIBE?



fluidity —

Tribes move as one organism—fluid and super efficient. Our philanthropic tribe may extend around the globe and include people we never meet. Yet we swarm and maneuver together. Each of us knows what to do and deploys our resource and intelligence. We see up close, find the shortest path, and move in the moment. Yet we're resonant and connected into larger patterns. Often it's someone in our tribe who appears at just the right moment with just the right thing. We hear together and are swept by the same current.

QUESTIONS

WHEN PARTNERS COME TOGETHER NOT BECAUSE OF ORGANIZATIONAL LOYALTY OR GEOGRAPHIC CONNECTION, WHAT DRAWS THEM?

WHEN THERE IS LESS STRUCTURE AND CENTRALIZED CONTROL, WHAT MUST BE STRONGER?

WHO ARE OUR REGIONAL AND GLOBAL ALLIES—AND TO WHOM ARE WE AN ALLY?



abundance —

In tribe we are superabundant. Overflowing. Everything is here—connected, present, part of us. Nothing is missing or unavailable. Genius and ability flow to us and from us. We are vulnerable and open to receive what we need, strong and able to release what we have. More is in motion. Less is in reserve. In tribe we precipitate abundance. Love and connection generate plenty where fear and isolation would create scarcity. It's not just a matter of how much is *out there*. Abundance arises from relationship as much as absolute resource.

QUESTIONS

WHEN DO WE GIVE MOST INSTINCTIVELY AND EASILY?

WHAT CAUSES US TO HOLD BACK, WITHDRAW, OR RESIST CONTRIBUTIONS WE COULD MAKE?

DO WE THINK AS MUCH ABOUT HOW OUR PARTNERS RECEIVE FROM US AS HOW THEY GIVE?