


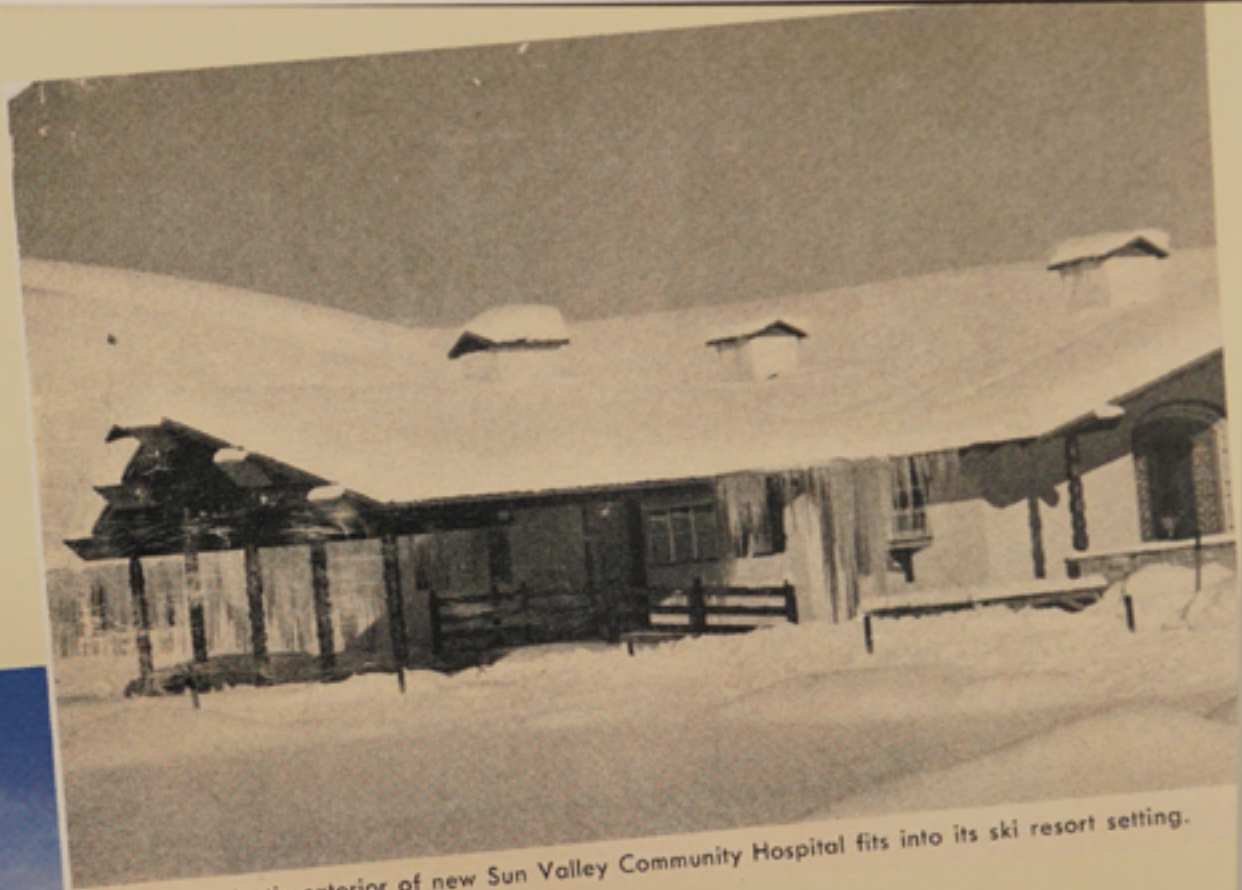


*Generosity:
a living story*

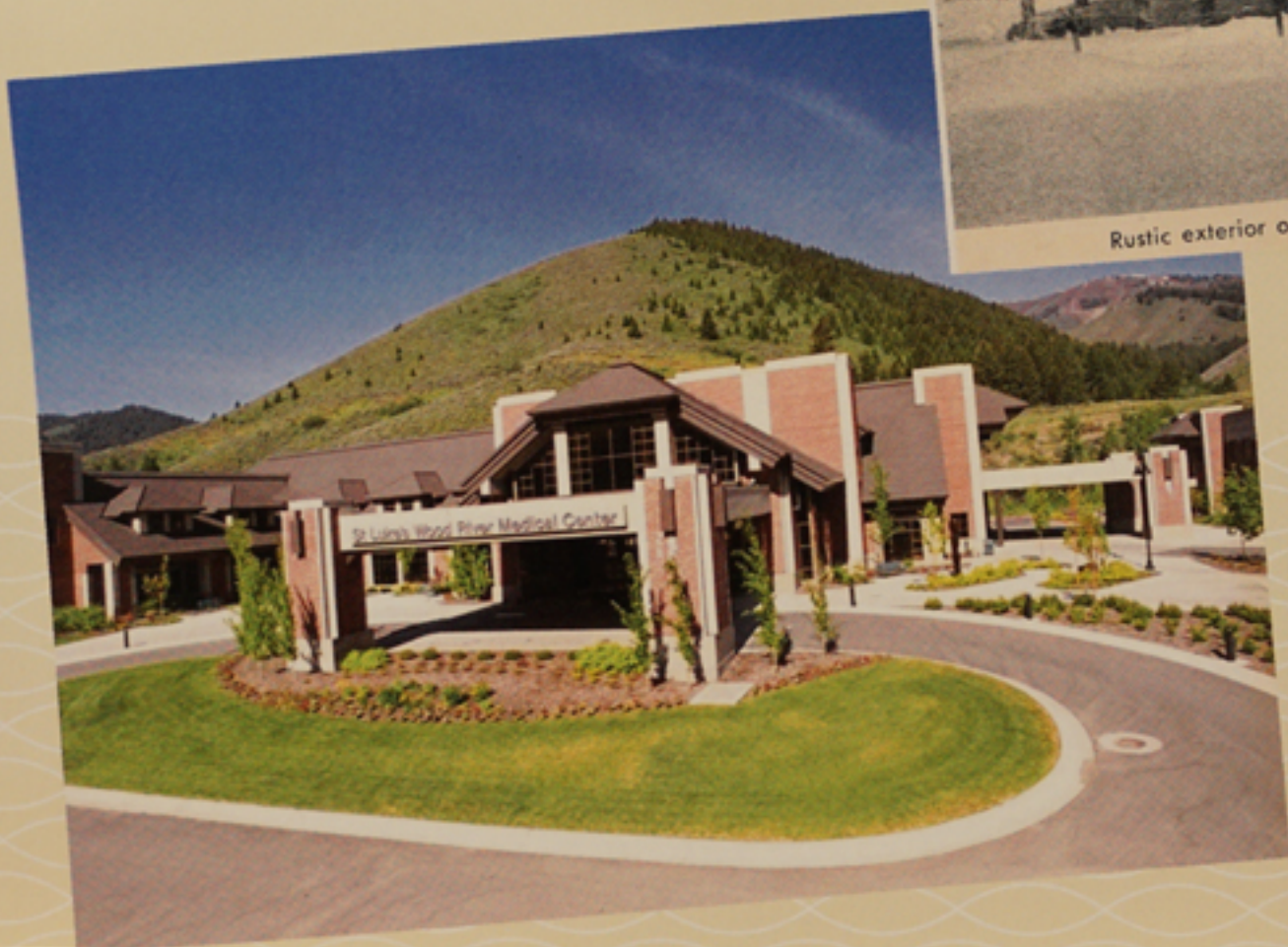
Shay Doll & Buddy Wilton

 **St Luke's**
Wood River
Foundation

Once Upon a Time...



Rustic exterior of new Sun Valley Community Hospital fits into its ski resort setting.



An incredible
achievement in
critical-access
healthcare was made
possible by an
uncommonly generous
community.



Enter agents of change and generous philanthropists, E. Carlton "Buddy" Wilton and Shay Doll, with a wild and wonderful idea to help St. Luke's Wood River staff survive unforeseen medical expenses in the name of physician, A. Patrick McLaughlin, MD.

And so became
THE CAROL & PAT MCLAUGHLIN ENDOWMENT



My wife, Carol and I were deeply honored by Shay Doll and Buddy Wilton when they created the McLaughlin Endowment.

This Endowment is to be used to assist hospital employees and their families in meeting medical expenses, when the need arises.

This thoughtful and compassionate gift is emblematic of Mr. Wilton and Ms. Doll's leadership and philanthropic contributions to our hospital and the community at large.

Carol and I, and so many people, are most grateful for the friendship and immense generosity of the Wiltons.

- Pat McLaughlin, MD

The McLaughlin Fund has since helped over 20 employees.
These are a few of their stories.

Alison Smart, RN,
Surgical Services
and Abby, DOG



I underwent an unexpected, total hip replacement in January of 2016. Receiving the grant from the McLaughlin Fund made certain that this unexpected major expense did not cause a serious financial headache for me. I am so grateful for the generosity of our community and my co-workers through the St. Luke's Wood River Foundation.

I intend to give back as I have received." - Alison

A photograph of a woman with long brown hair, smiling, standing in front of a large wooden bookshelf filled with books. She is wearing a light blue cardigan over a white and blue striped shirt and dark pants. Her hands are clasped in front of her. In the top left corner of the overall image, there is a yellow crescent moon and a white cloud containing the text 'OVER THE MOON'.

OVER THE
MOON

"The incredible generosity of my peers saved me from financial strife. I am forever grateful to everyone who helped me through my accident." - Rosie McGee, Medical Staff Services Manager

Shelly Abell, RN,
Family Practice
and Family



With joy today, I extend to you a heartfelt
thanks for the kind donation last year towards
our medical debt. We will forever be grateful!

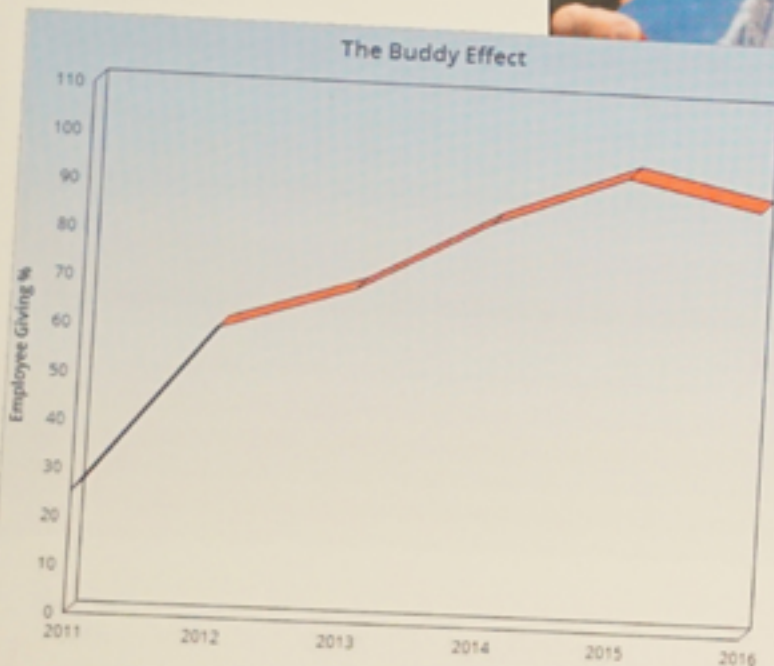
Thank you!
The Abell Family

Not only did you provide the vision and generosity to make the McLaughlin Endowment possible, you inspire employees to continue to give to the Fund to support their peers, year after year.



... and then some ...

The Employee Giving Campaign

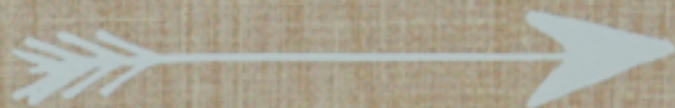


Since you have been involved, the rate of employee participation skyrocketed and continues to blow the rest of the nation out of the water.



Grateful

There is not enough film in our camera or pages in this book to express the depth and breadth of your generosity. Here are just some of the critical initiatives you've made possible.



With your help, the Pediatric Endowment was born

Through the generous funding of the Pediatric Endowment, pediatric care has been reestablished in the Wood River Valley. We have been able to provide high quality local care that families need and they appreciate being able to access that care locally.



- Bart Adrian, MD



*"Children do not care how much you know until they know how much you care."
- Teddy Roosevelt*



Families all over the Valley rejoice knowing the OB team at St. Luke's Wood River are leaders in care thanks to the opportunity for rotation education.



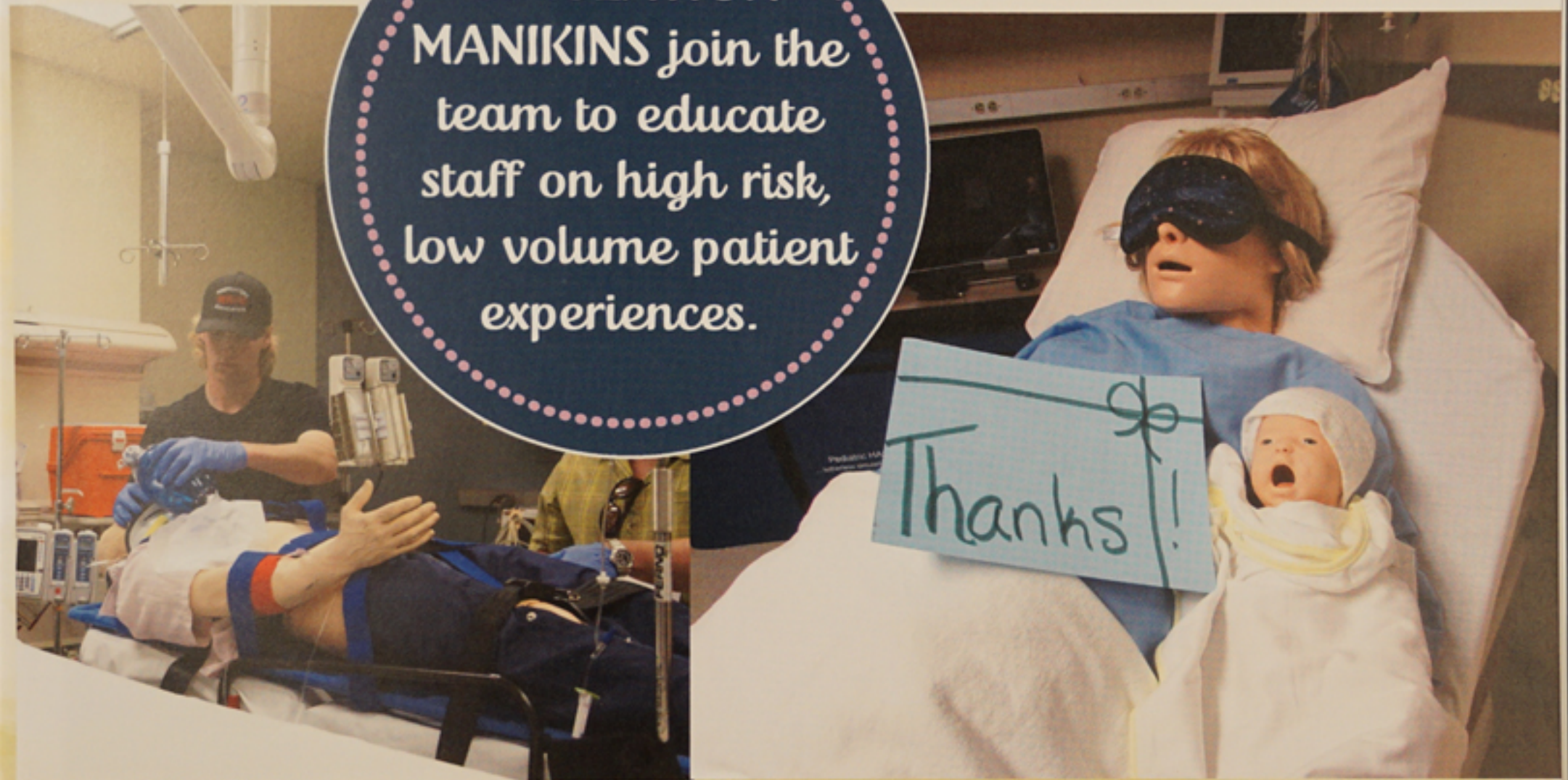


*"Education is the most powerful weapon
we can use to change the world"
- Nelson Mandela*

A new MENTAL HEALTH CLINIC opens to address one of the most critical needs in the Valley.



SIMULATION
MANIKINS join the
team to educate
staff on high risk,
low volume patient
experiences.





Under your leadership, our
EMERGENCY SERVICES are the
very best, which is especially
important to a critical access
hospital.



Fueled by Generosity



3-D
MAMMOGRAPHY
was a triumph for
Women's Health



The SLWR Women's Imaging Team
with the new, 3D Mammography machine



SPINE NAVIGATION TECHNOLOGY combines Dr. Verst's skill and expertise with the accuracy of a robot to make a safer, more comforting patient experience. (The first of its kind in a five state region.)

Presenting one of the greatest achievements in
the history of St. Luke's Wood River....



...the expansion of
INFUSION SERVICES!



Farewell,
Broom Closet



*"I think a hero is
anyone really intent
on making this a better
place for all people."
- Maya Angelou*



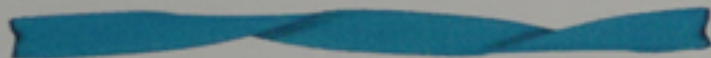
*Buddy and Shay,
you are true heroes
and a profound
inspiration to us all.*



With Tremendous Gratitude & Admiration,



Mission: To accelerate the advancement of innovative programs and services that fundamentally improve healthcare experiences in our community.



Vision: To guarantee the availability of resources and community expertise for achieving excellence in healthcare.

