



challenging our **ORTHODOXIES**

1



What's the first orthodoxy you remember challenging as a child?

A large, empty rectangular box with a light blue gradient, intended for a user to write their answer to the question above.

2

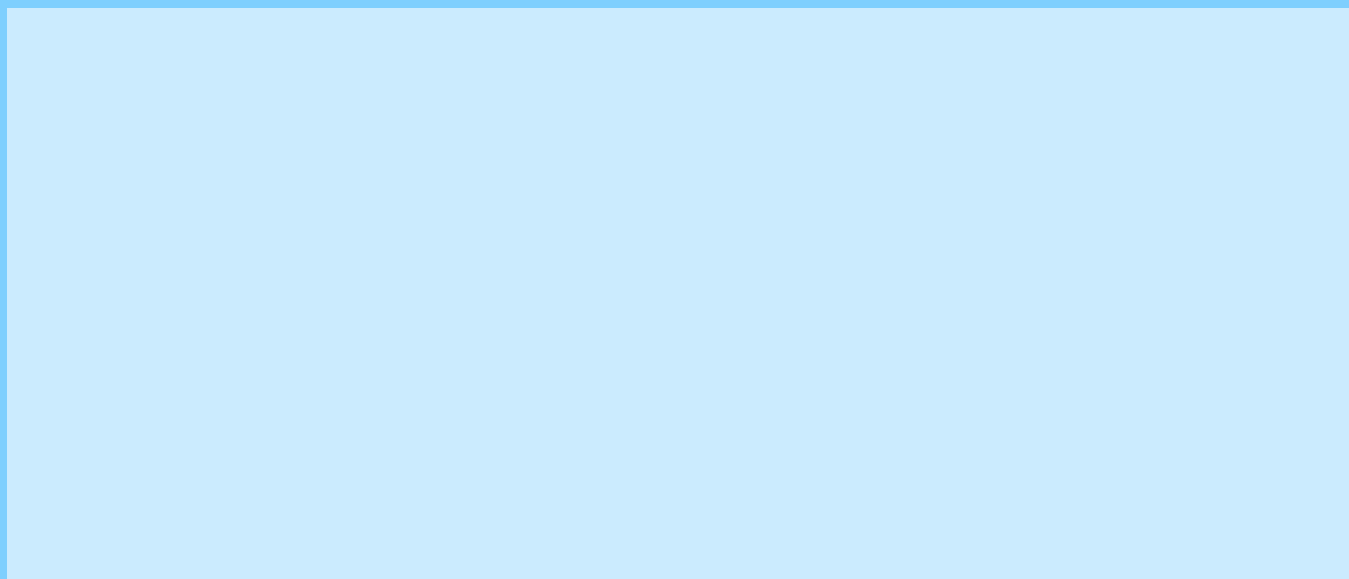


challenging our **ORTHODOXIES**

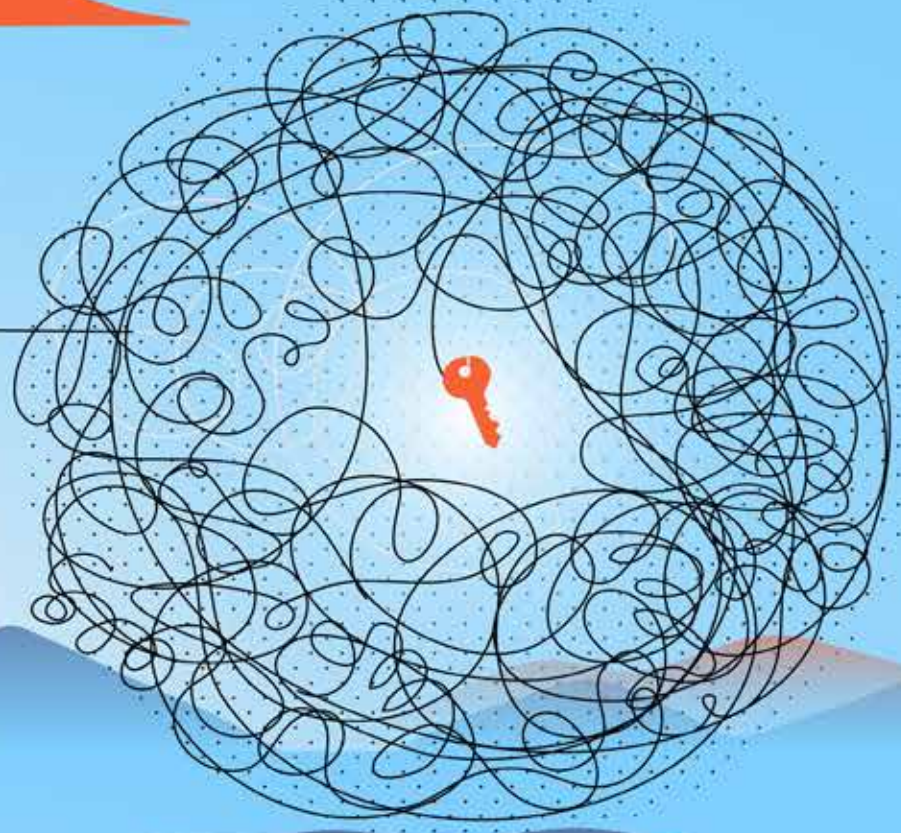
2



*What orthodoxy is common with family or friends
that you know to be untrue?*



3



challenging our **ORTHODOXIES**

3



What wisdom quip—like “money doesn’t grow on trees”—are you most known for? Describe how it may be more untrue than true.

A large, empty rectangular box with a light blue gradient, intended for the user to write their response to the prompt.

4



challenging our **ORTHODOXIES**

4



What was one of your greatest mistakes—and what did you learn? Describe an alternative insight that seems counter to what you assumed you were supposed to learn.

A large, empty rectangular box intended for the user to write their response to the question above.

5



challenging our **ORTHODOXIES**

5



What's one of your greatest gifts? How is it holding you back?

A large, empty rectangular box intended for a user to write their response to the question above.

6



challenging our **ORTHODOXIES**

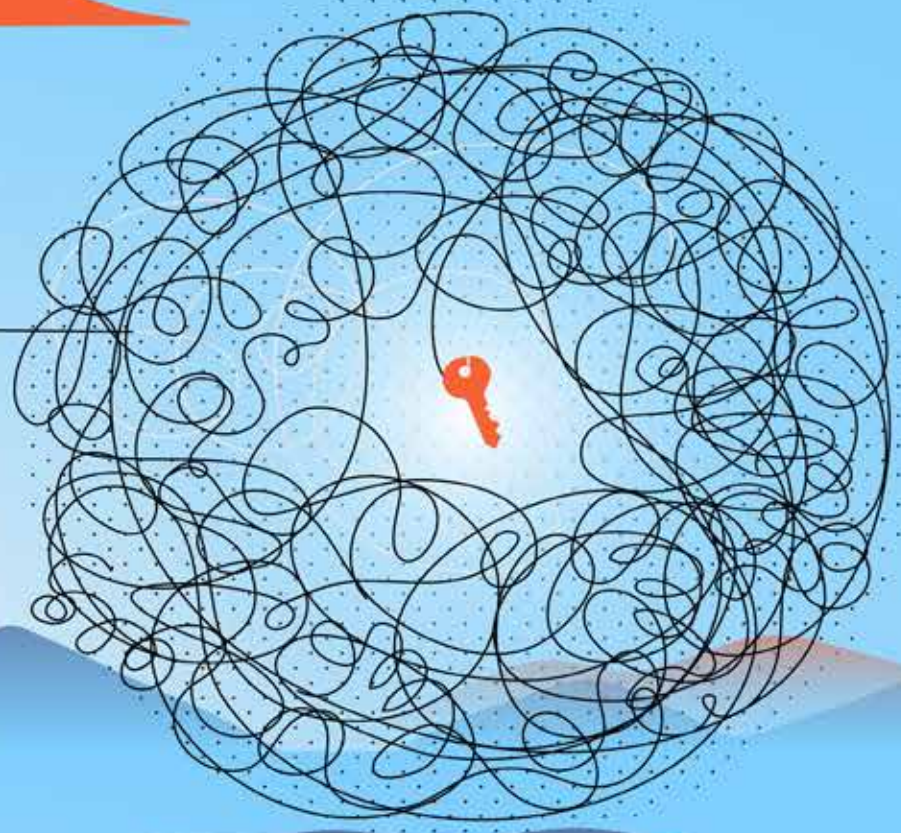
6



What's a negative one-liner you often say—like “when the cat's away the mice will play”? Describe how that may be more about you than the world around you?

A large, empty rectangular box intended for the user to write their response to the question.

7



challenging our **ORTHODOXIES**

7



How has “the best thing that ever happened to you” actually been more limiting than expanding?

8



challenging our **ORTHODOXIES**

8



Describe a contribution a team member makes that you suspect they undervalue—or don't recognize.

A large, empty rectangular box intended for writing a response to the prompt above.

9



challenging our **ORTHODOXIES**

9



What’s a positive one-liner you often say—like “it will all work out in the end”? Describe how that frame of mind might decrease—not increase—the odds of good outcomes.

A large, empty rectangular box with a light blue gradient, intended for the user to write their response to the question above.

10

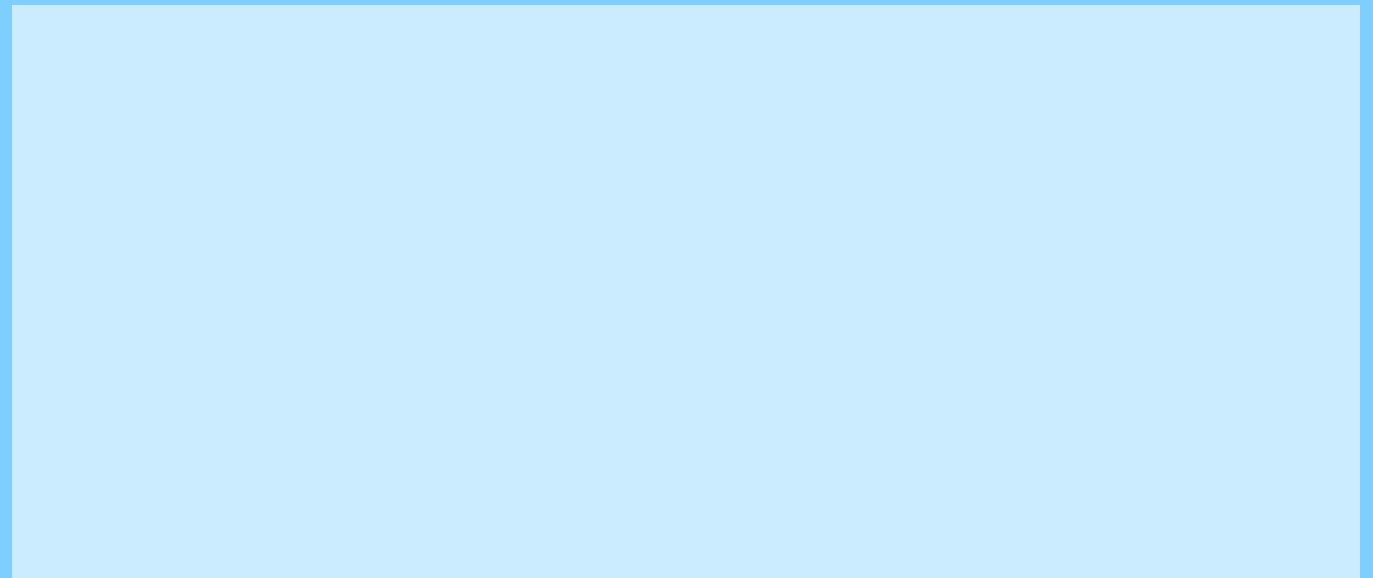


challenging our **ORTHODOXIES**

10



What's an orthodoxy that creates something of value, but when understood from a broader perspective, may occlude something of even greater value?



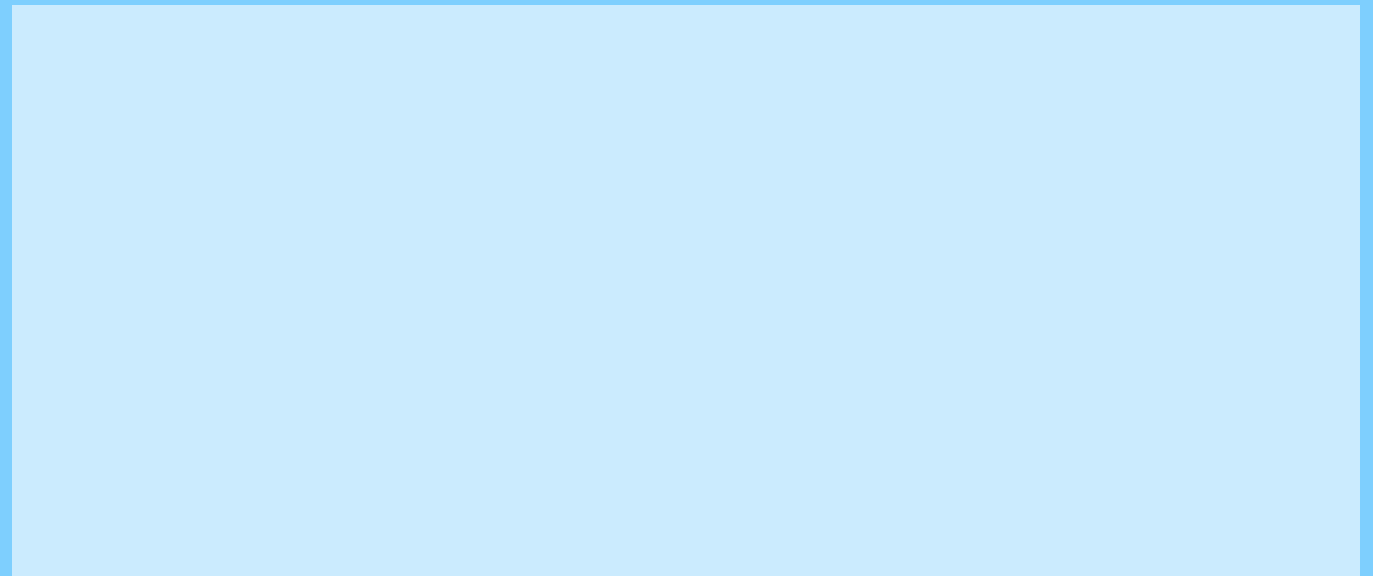


challenging our **ORTHODOXIES**

11



What questions might help you uncover previously unrecognized personal orthodoxies?



12



challenging our **ORTHODOXIES**

12



What personal orthodoxy did you recognize for the first time today that may be important to evolve—or shed?

A large, empty rectangular box with a light blue gradient, intended for a user to write their response to the question above.